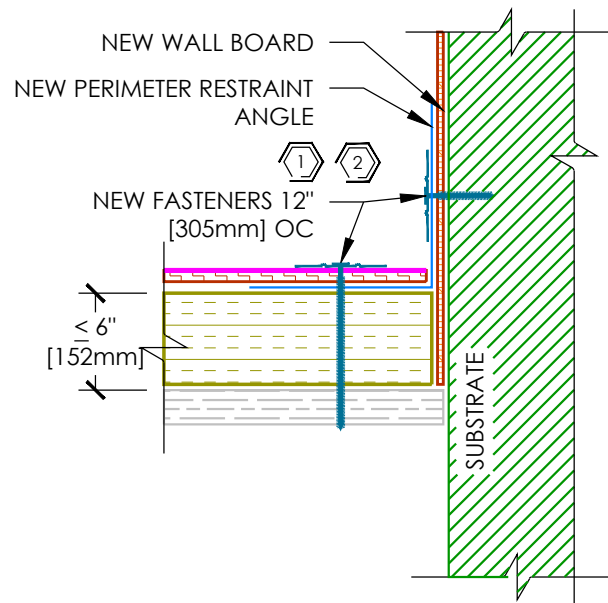
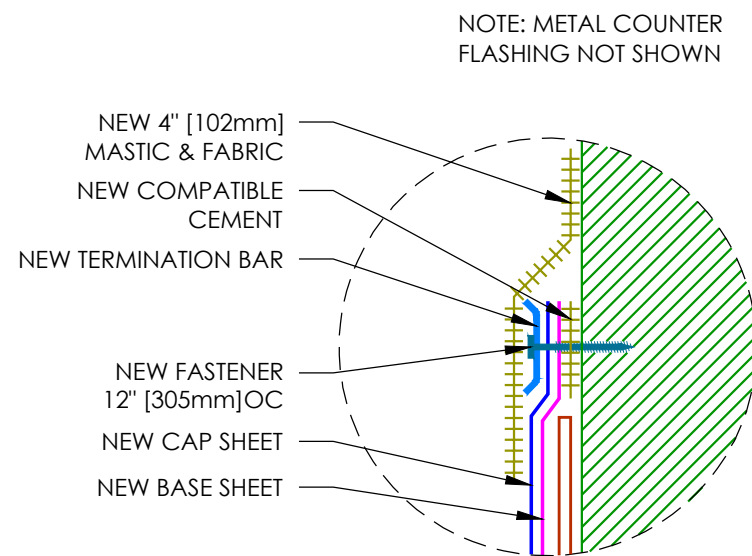


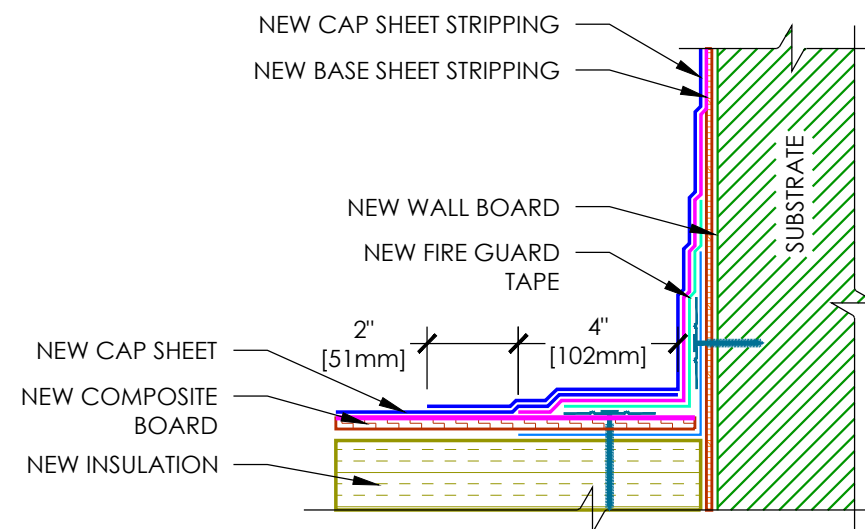
1 ROOF PROFILE
NTS - OBSERVATION DECK



2 PERIMETER RESTRAINT
NTS



3 MEMBRANE TERMINATION
NTS



4 BASE TIE IN
NTS

GENERAL NOTES

- FULL ROOF ASSEMBLY MAY NOT BE SHOWN. REFER TO DETAIL 1 ON A 5.01 FOR ROOF COMPOSITION.

KEY NOTES

- LAY ASPHALTIC CORE BOARD ON ANGLE FLASHING AND MECHANICALLY ATTACH PANEL TO ANGLE FLASHING WITH 2" [51mm] PLATES AND FASTENERS @ 12" O.C. [305mm]
- MECHANICALLY ATTACH ANGLE FLASHING TO PARAPET/WALL/CURB WITH 2" [51mm] PLATES AND FASTENERS @ 12" O.C. [305mm]

RMIS ENGINEERING



389 MAXWELL CRESCENT
Regina, SK S4N 5X9
www.rmiseng.ca
Phone 306.352.4606
Fax 306.352.4607



LIVING PRAIRIE
MUSEUM
C.13.SK.35-18.03.03

2795 NESS AVENUE
WINNIPEG, MB R3J 3S4

CITY OF WINNIPEG

4TH FLOOR - 135 KING STREET
WINNIPEG, MB R3B 1J1

No.	DATE	DESCRIPTION

DESIGNED BY SMC 04/18/2018
DRAWN BY SED 04/18/2018
REVIEWED BY SMC 04/18/2018

TYPICAL
DETAILS

A 5.01